

ADVANCE FACILITIES SOLUTIONS



0808 178 9023
www.advance.fm

About Advance

We offer a single point of contact for reactive, planned and specialist works in the industrial, commercial and domestic sectors. Covering from the South East to the Scottish borders 24/7 – 365 days a year

Covering:

- **Emergency attendance**
- **Reactive works**
- **Planned preventative maintenance visits**
- **Project works**
- **Quotations**
- **Site surveys**
- **Drone surveys**



Why use Advance ?



Fully trained staff



Cost efficient



Specialist services



Assurance of
compliance



All your requirements under one roof

Our Services





FABRIC

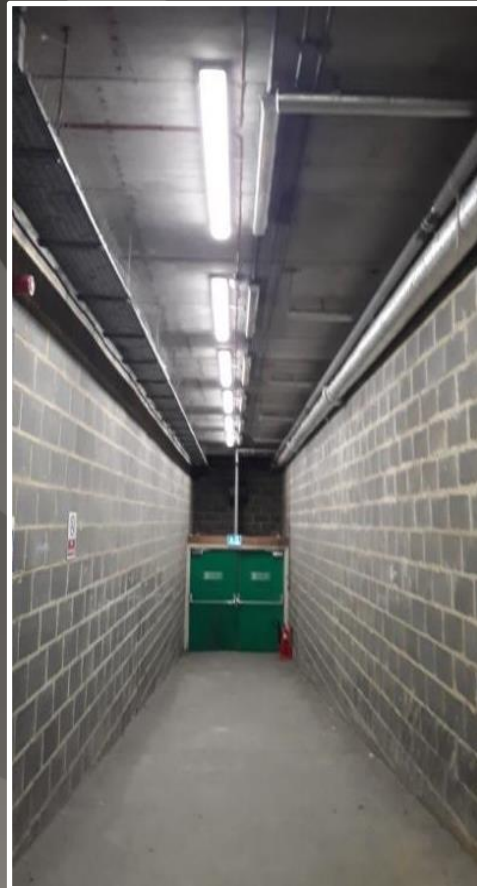
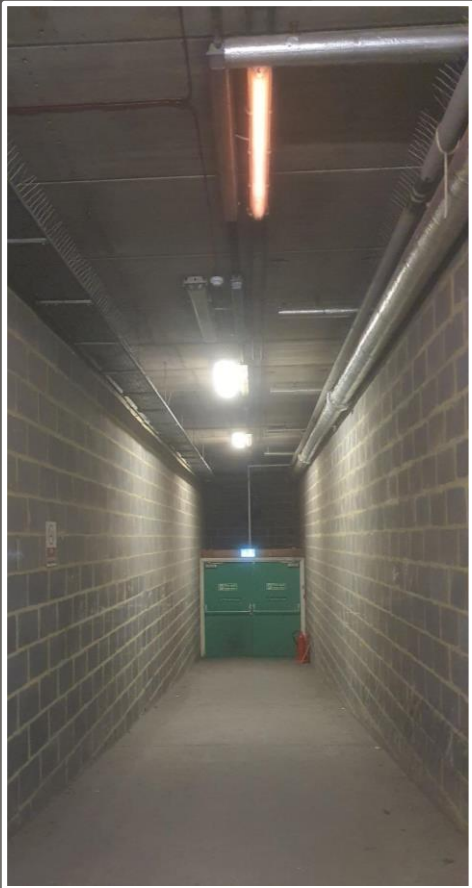


We provide a proactive maintenance service to a number of high-profile sites. We offer a variety of different maintenance services and can tailor to your needs

- General repairs
- Painting and decorating
- Plastering
- Rendering
- Bricklaying
- Groundworks
- Tarmacking
- Roofing
- Carpentry
- Plumbing
- Joinery
- Civil works



RETAIL



Our multi-skilled M&E operatives cover a large variety of works whilst ensuring full compliance to current legislations and regulations

- Electrical testing
- HVAC servicing
- Commercial heating
- Water hygiene monitoring and sampling
- Fire safety equipment servicing
- Fire door inspections
- Emergency light testing
- PAT testing
- LED lighting upgrades
- M&E planned and reactive maintenance



DRAINAGE

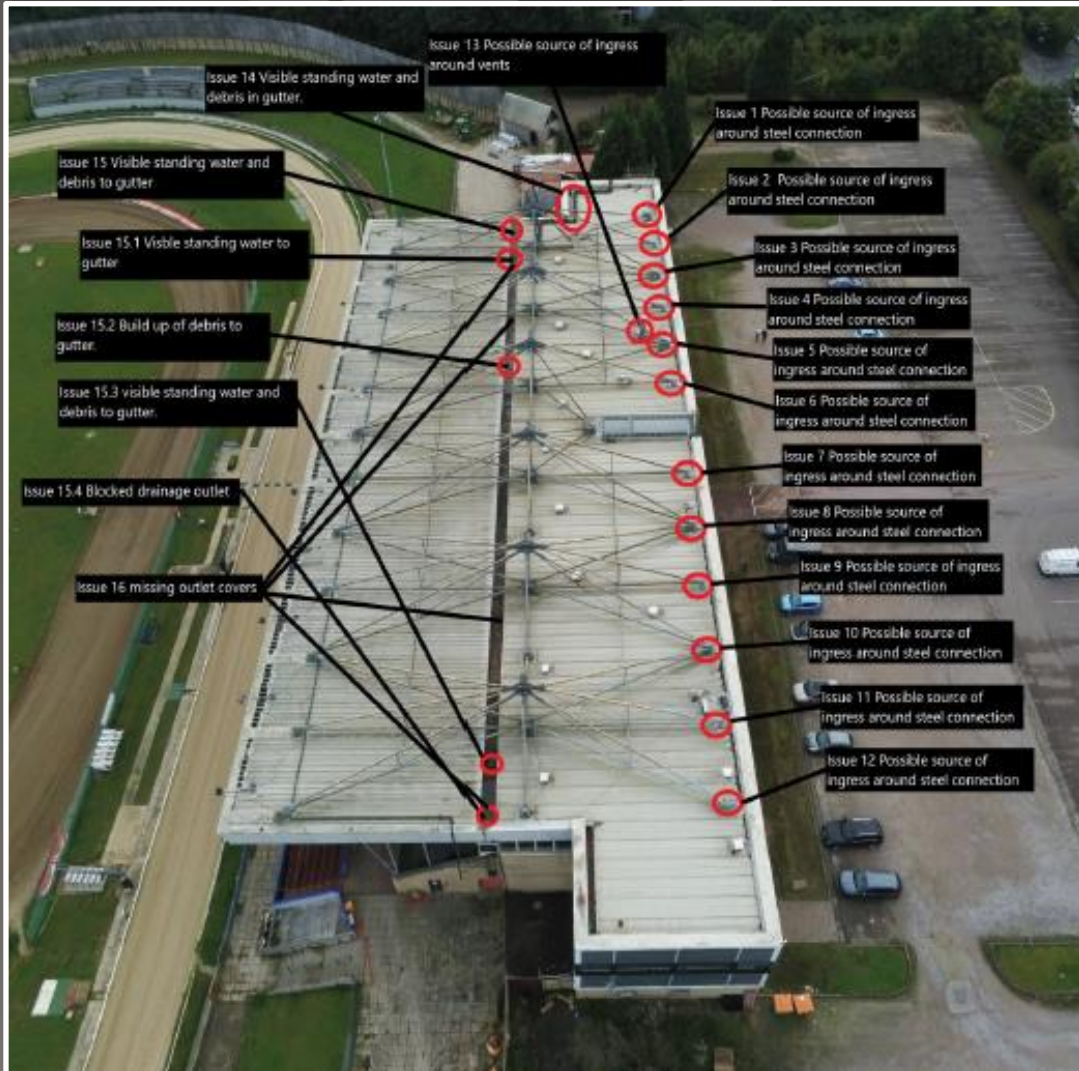


Our specialist team combine their extensive experience with up to date technology to find the most suitable solutions

- CCTV surveys
- Yard gully cleaning
- Washing down of buildings and structures
- Sewer connections
- Gutter clearing and cleaning
- Pipe re-rounding
- Sewage tank installation
- Tanker services – with use of our own tanker
- PPM programmes
- Drain, pipe and patch lining
- Drain unblocking
- Emptying of petrol interceptors
- Cleaning of pump stations
- Root cutting



DRONES



Offering building inspections, roof surveys and aerial photography using our very own eye in the sky with our specialist Civil Aviation approved Drone Surveyor

- Photography
- Mapping
- Land-use planning
- Environmental studies
- Conveyancing
- Building inspections
- Roof surveys
- Gutter surveys
- Condition reports
- Thermal imaging



ENTRY



Specialising in a large variety of entry systems, all works are carried out with H&S and Fire Safety Regulations in mind to ensure full compliance at all times

- **Manual and automatic industrial doors:**
Roller shutters, overhead sectional, fire shutters and curtains, folding shutters, security grilles and wicket doors
- **Manual and automatic gates and barriers:**
Swing, sliding and bi-fold
Force testing and certification
- **Manual and automatic pedestrian doors:**
Fire, swing, sectional, industrial sliding, bi-fold, steel and timber



PROJECTS



We cater for all aspects of Commercial, Domestic and Industrial building and refurbishment requirements. From a survey to the planning, designing, construction or overhaul of new and existing facilities

- Major refurbishments
- Roof and flooring requirements
- Grade 2 listed building repairs and renovations
- Ram raid repairs
- Drainage works
- Civil works
- Environmental works
- Structural works
- New build



Health & Safety and Accreditations

- In-house IOSH Health and Safety representatives
 - Constructionline Gold
 - Monthly tool box talks
- Regular employee training programmes
 - Online Health and Safety portal
 - Online RAMS system
- In-house Mental Health Advisors



INVESTORS IN PEOPLE
We invest in people Silver



Contact Details & Escalation

- Experienced Helpdesk team available 24/7
- Key Account Management team
- Estimators
- Strategic based engineering team



01622 720888



helpdesk@advance.fm

Managing Director

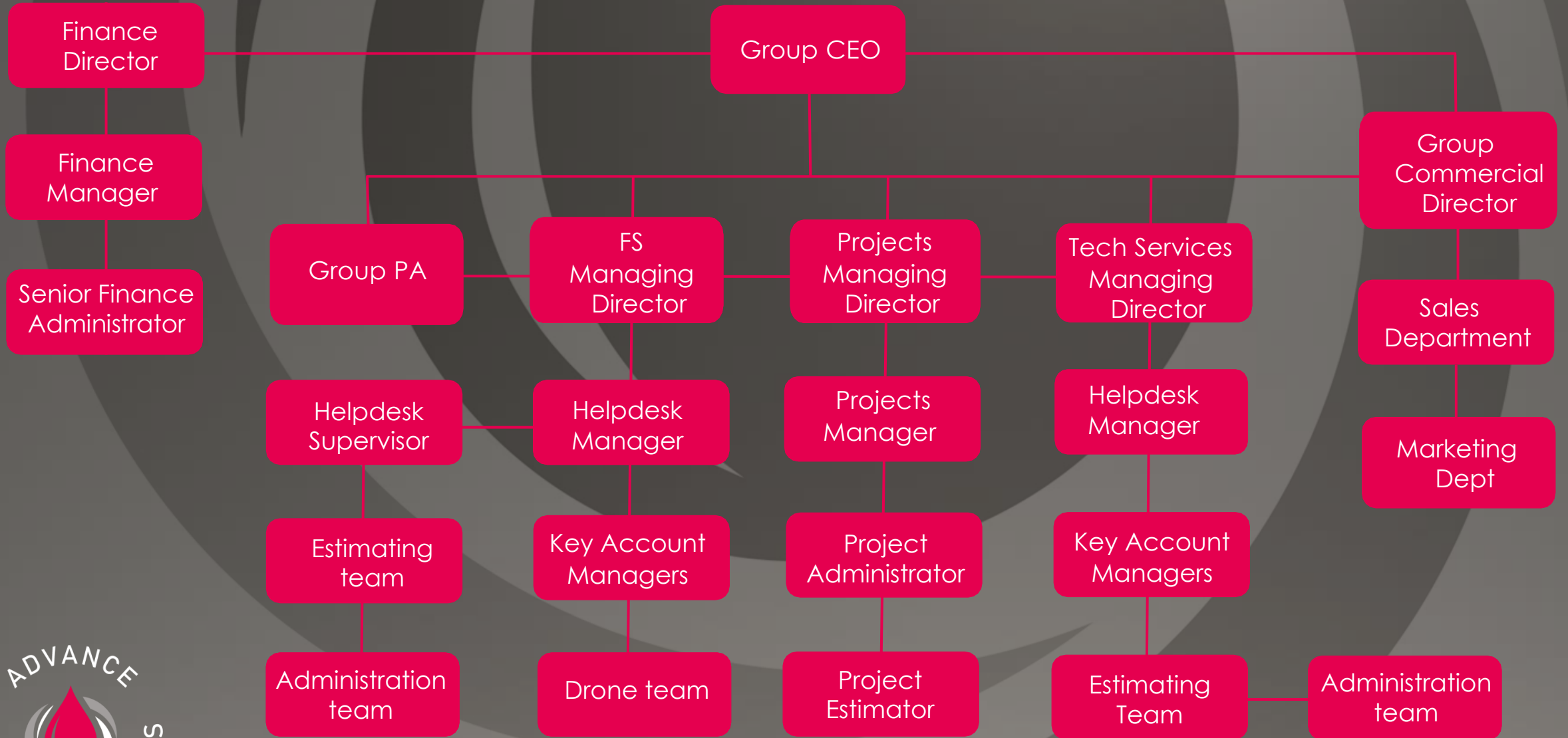
Key Account Manager

Helpdesk Manager

Helpdesk Team



Company Structure



Our Software - simPRO

Using simPRO computer software enables us to fully manage your requirements; reactive and planned maintenance, emergency attendance, remedial works and PPM visits

Benefits of simPro:

- Paper-free
- Cloud based
- GPS Tracking
- Live updates from the field
- Integrated solutions
- Live engineer availability
- Instant scheduling
- Clients electronically sign
- Email documents direct to client
- Instant photographs from site
- Loaded RAMS
- More efficient
- Quicker system
- Pre-loaded client rates



simPRO

Innovations - IoT

We offer our clients new smart building IoT technology

Benefits of IoT:

- **Supplying live data to a personalised dashboard that can be accessed via your computer or mobile device**
- **Predicting, preventing and protecting M&E equipment from failing – saving companies thousands of pounds**
- **Sending alerts to prioritise jobs – enabling us to send the right technician**

Using unique highly sensitive sensors to monitor:

- **Energy consumption**
- **Occupancy**
- **Water temperatures for compliance**
- **Refrigerant pressures**
- **Emissions from gas boilers**
- **Water leaks**
- **Indoor air quality**
- **Chemical levels**



Sustainability & Environmental

At Advance FM, concern for the environment and promoting a broader sustainability agenda are integral to everything we do. We follow and promote the best possible sustainability practice, to reduce the environmental impacts of all our activities and to help our clients and partners to do the same.

We are 100% committed to recycling and/or re-using material wherever possible and for every piece of work that we do, we monitor and manage our use/generation of energy, water, resources, transport, emissions, waste, and contamination.

Our ISO14001 certification, underpinned by our environmental and sustainability policies, helps to evidence the commitment that our organisation has towards supporting a sustainable future. Policies are reviewed on an ongoing basis to ensure that they are up to date. Sustainability is a recurring/standing item at all Quarterly Board Meetings and both policies are subject to an annual review and refresh.



Charities & Local Community

We are proud to support our local community and its charities. Helping others that need to be helped and making a difference within our community. Not only by raising much needed funds to support the amazing work they do but also by raising awareness.

Here's just a few of the amazing charities that we support:



www.dandeliontime.org.uk



www.gosh.nhs.uk

**MACMILLAN
CANCER SUPPORT**

www.macmillan.org.uk



@BEKSBringEveryKindSmile



www.hokh.org



**Kent Office: Unit 10, St Laurence Avenue,
20/20 Industrial Estate, Maidstone Kent
ME16 0LL**

**London Office: 22 Tudor Street, London
EC4Y 0AY**



01622 720888



helpdesk@advance.fm



www.advance.fm

